

User Accounts

(CISS 150 William Jojo)

Create users in Ubuntu:

```
adduser --home /home/username --gecos "gecosvalue" username
```

[Prompts for password]

Substitute values for *username* and *gecosvalue*. Typical *gecos* values are a user's full name.

Users are stored in `/etc/passwd` and passwords are stored in `/etc/shadow`.

Groups are stored in `/etc/group`.

Delete Users in Ubuntu:

```
deluser --remove-home username
```

Create users in Windows XP & Server 2003 (without AD):

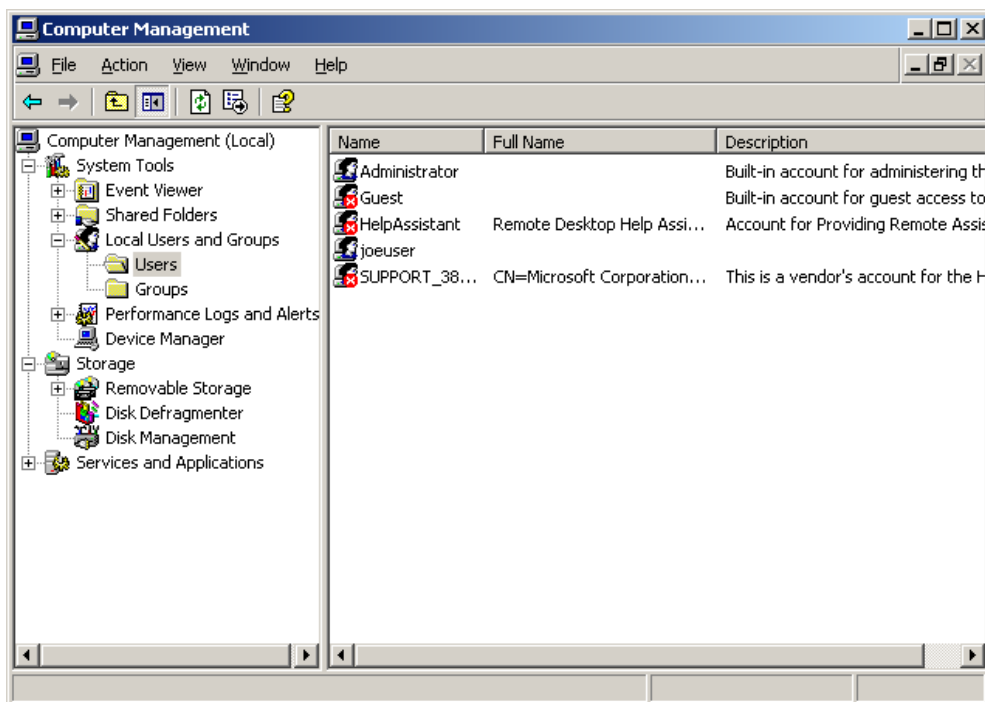


Illustration 1: Computer Management window from Administrative tools.

From the Start Menu select Control Panel/Administrative Tools/Computer Management.

Expand Local Users and Groups and select Users to view the current user list as shown in *Illustration 1*.

Right click on Users or in the right panel to create a new user. Enter values for new user as shown in *Illustration 2*.

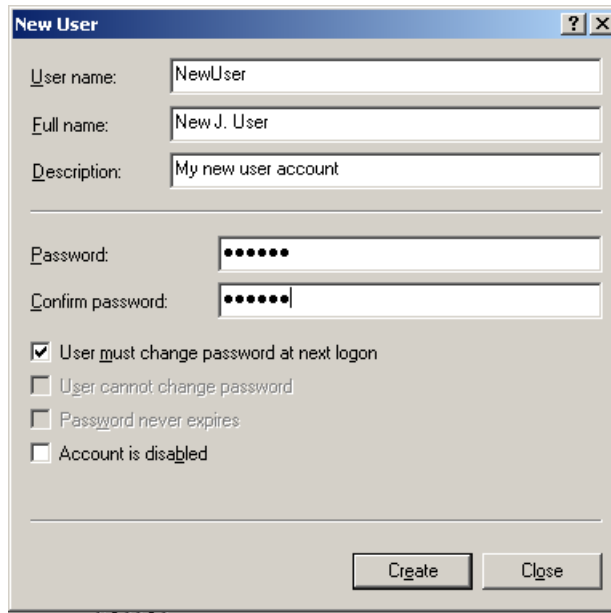


Illustration 2: New user panel.

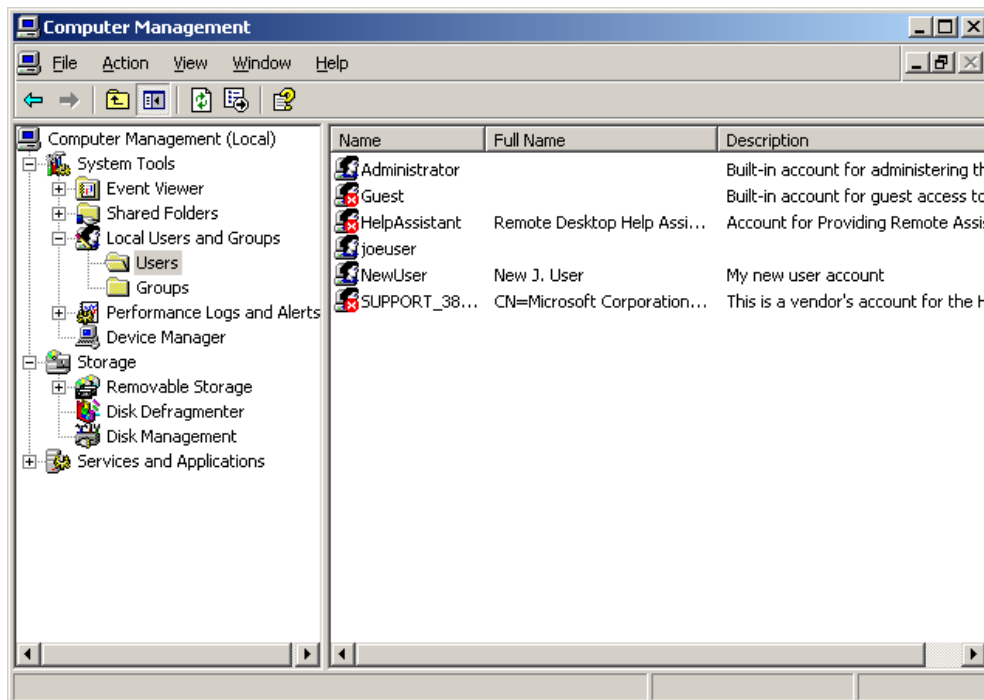


Illustration 3: New user added to Users.

Delete User in Windows XP & Server 2003 (without AD):

Right click on the user listed in the right panel of `Users` and select `Delete`.

LAB (10 points):

- Create a new user account for each guest operating system. Test login with each user on each guest.
- Download the SSH client software from the Hudson Valley CLC site. Install it on both Windows guests and use it to log into the Ubuntu guest with the newly created user account.